

**Is your family breathing  
healthy indoor air?**

**Know the facts  
about Indoor Air  
Quality and get  
the test!**

 *Home*  
***advice***<sup>®</sup>  
Healthy air starts here.<sup>™</sup>





## Did you know...

- Americans spend 90% of their time indoors.
- Indoor air may be 2 to 5 times more polluted than outside air.
- Today's tightly sealed and energy-efficient houses save money but often do a poor job of filtering and purifying the air we breathe in our homes.



## Did you know...

- More than 50% of Americans live with someone who has allergies, asthma or another respiratory condition.\*
- Asthma affects 20 million people, 6.3 million children.
- The biggest growth in asthma cases are in children under age 5.

\*American Lung Association

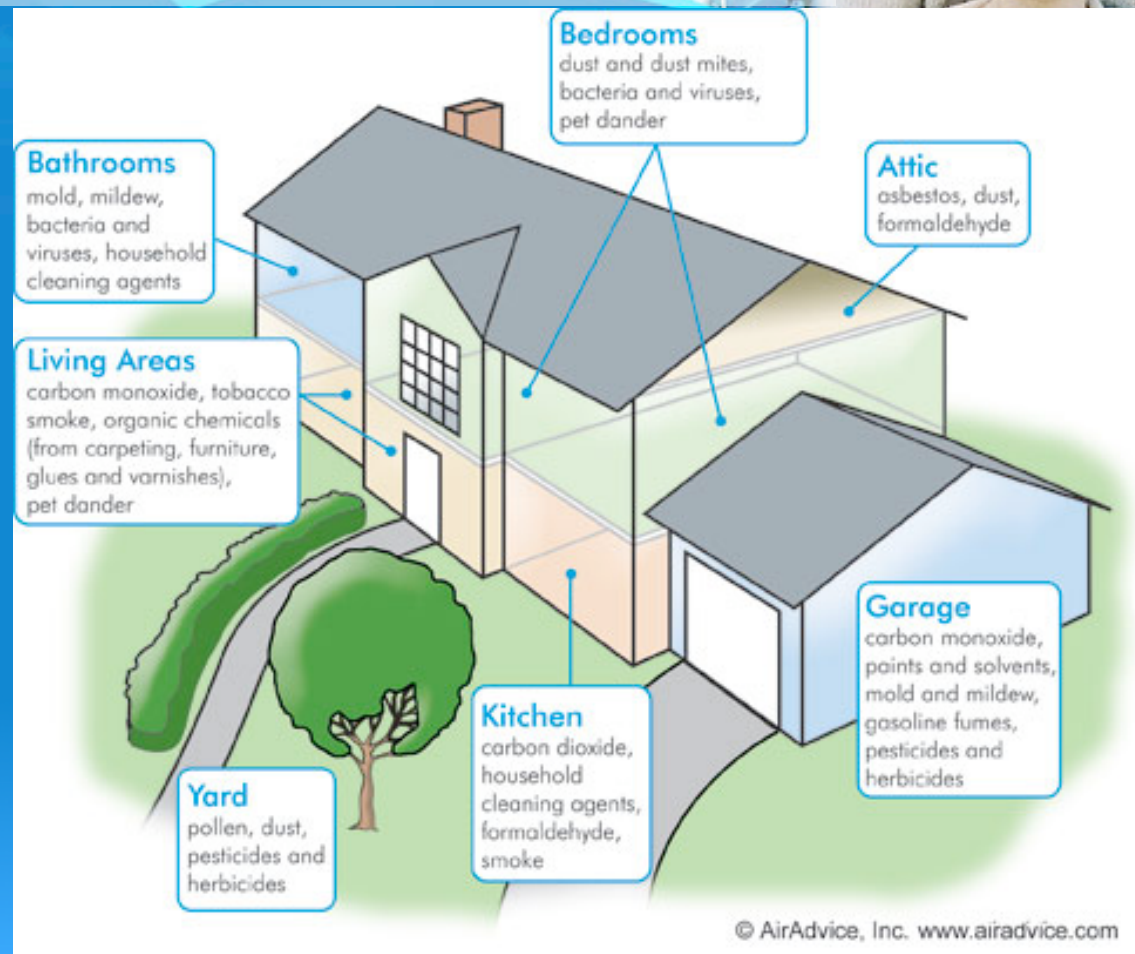


## Did you know...

- Your home may have many sources of pollutants that could affect your families health, comfort and/or safety.



# Sources of Indoor Air Pollutants





## Did you know...

- You can now test the indoor air quality of your home.
- Your HVAC professional may offer a HomeAdvice indoor air quality test.



# What does a HomeAdvice™ test include?

**AirAdvice® for Your Home**

**Prepared For:**  
 Mr. John Smith  
 123 Peacock Lane  
 Anytown, USA 10101

**Conducted By:**  
 XYZ Heating & Cooling  
 866-247-4800

**Test Period:**  
 10/7/05 – 10/9/05

**Monitor ID:**  
 #00001

**Report ID:**  
 #12345

This report offers recommendations so you can make informed decisions about your family's health, comfort and safety. Knowing what's in the air you breathe and what you can do about it has never been more important. If you have additional questions, visit [www.airadvice.com](http://www.airadvice.com) or call 503-295-6610.

	HEALTH	COMFORT	SAFETY
<p><b>What We Tested</b></p> <p><b>What We Found</b></p> <p><b>Possible Causes</b></p> <p><b>Recommended Action</b></p>	<div style="text-align: center;"> </div> <p style="text-align: center; background-color: red; color: white; padding: 2px;"><b>Action Necessary</b></p> <p><b>Particle Allergens, Chemical Pollutants, Carbon Dioxide</b></p> <ul style="list-style-type: none"> <li>&gt; <b>Particle Allergens:</b> Levels significantly elevated</li> <li>&gt; <b>Chemical Pollutants:</b> Levels significantly elevated</li> <li>&gt; <b>Carbon Dioxide:</b> Levels elevated</li> </ul> <hr/> <ul style="list-style-type: none"> <li>• Inadequate Filtration</li> <li>• Fresh air not being introduced</li> <li>• Build-up of chemical off gasses from synthetics</li> </ul> <hr/> <ul style="list-style-type: none"> <li>• Upgrade filtration</li> <li>• Add ventilation</li> <li>• Add pollutant removal equipment</li> <li>• Remove sources of chemical pollutants, if possible</li> <li>• Run system fan continuously</li> </ul>	<div style="text-align: center;"> </div> <p style="text-align: center; background-color: orange; color: white; padding: 2px;"><b>Action Recommended</b></p> <p><b>Temperature, Relative Humidity</b></p> <hr/> <ul style="list-style-type: none"> <li>&gt; <b>Temperature:</b> Somewhat cool</li> <li>&gt; <b>Relative Humidity:</b> Somewhat dry</li> </ul> <hr/> <ul style="list-style-type: none"> <li>• Temperature setpoint or thermostat control point is too low</li> <li>• Inadequate, malfunctioning, or no humidification equipment</li> </ul> <hr/> <ul style="list-style-type: none"> <li>• Check thermostat for proper setpoint and function</li> <li>• Install or improve humidification equipment</li> </ul>	<div style="text-align: center;"> </div> <p style="text-align: center; background-color: green; color: white; padding: 2px;"><b>No Action Necessary</b></p> <p><b>Carbon Monoxide Radon</b></p> <hr/> <ul style="list-style-type: none"> <li>&gt; <b>Carbon Monoxide:</b> Levels acceptable</li> <li>&gt; <b>Radon:</b> Levels acceptable</li> </ul> <hr/> <ul style="list-style-type: none"> <li>• None</li> </ul> <hr/> <ul style="list-style-type: none"> <li>• No action necessary</li> </ul>

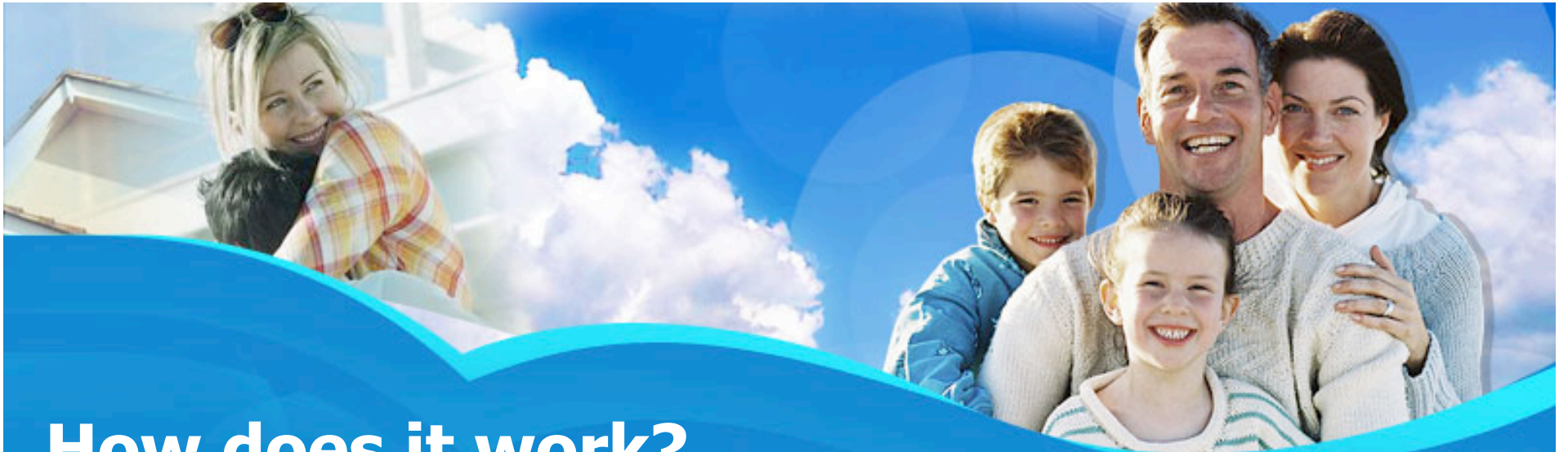
© 2008 AirAdvice, Inc. ALL RIGHTS RESERVED

- Particle Allergens such as dust, dirt and pet dander.
- Chemical Pollutants
- Carbon Dioxide
- Temperature
- Relative Humidity
- Carbon Monoxide
- Radon



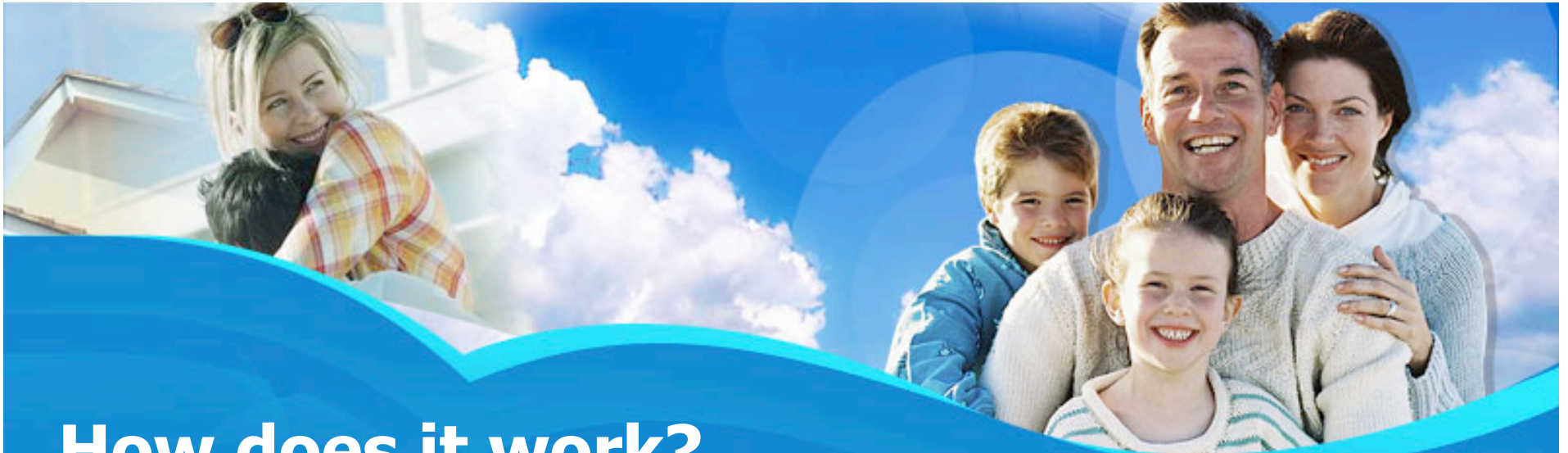
## What is HomeAdvice™?

- HomeAdvice™ is an indoor air quality and testing system from AirAdvice, an independent third party testing company.
- The AirAdvice mission is to help people improve their respiratory health by reducing exposure to contaminants in the home and at work.



## How does it work?

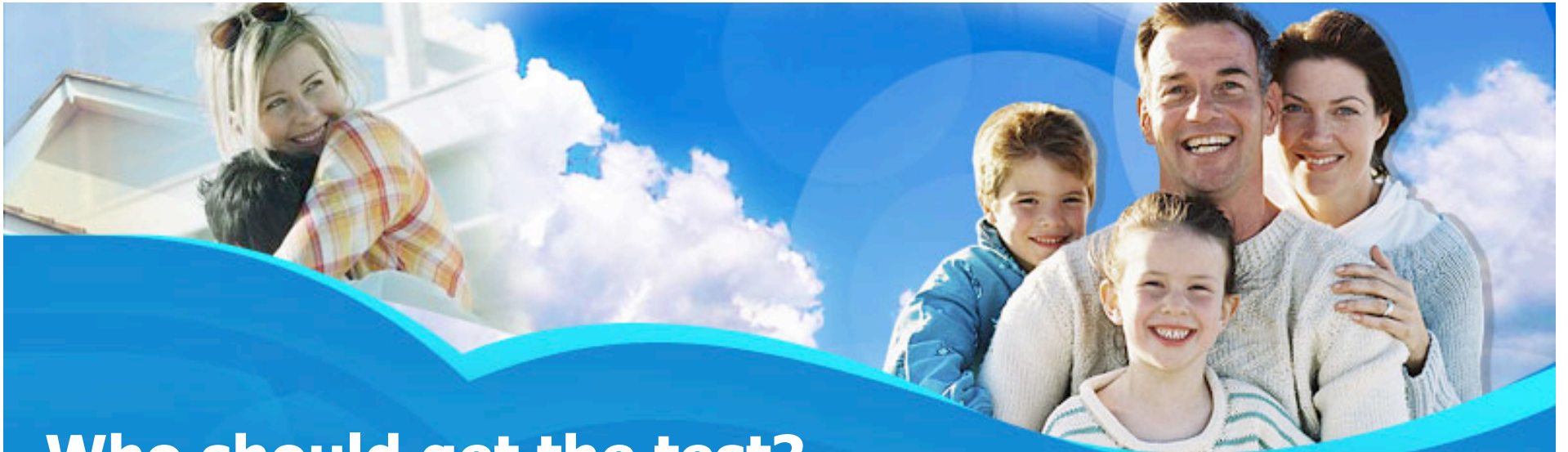
- A HVAC professional places a HomeAdvice monitor in your home.
- The monitor takes a reading of your home's indoor air quality every minute over three days.
- The monitor operates quietly.



## How does it work?

- The monitor is connected to your home phone line.
- There is NO interruption of your phone service while the monitor is placed.
- We generate an easy-to-read report to review with you.

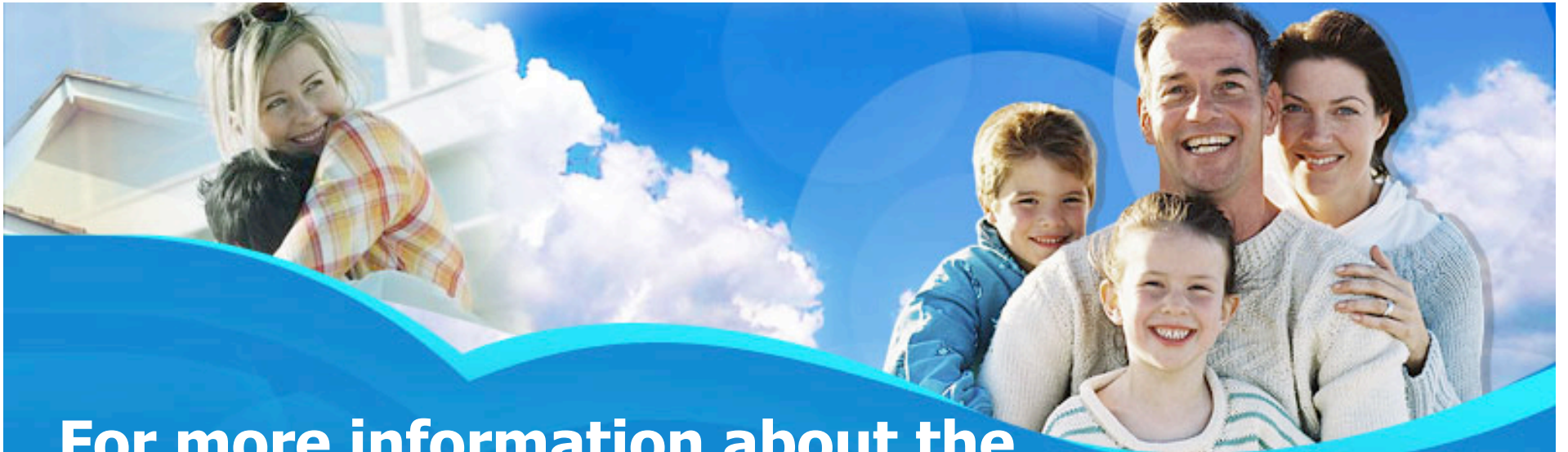




## Who should get the test?

If you answer “Yes” to any of the following questions....

- Do you have comfort concerns about your home such as rooms too hot, too cold, too humid or too dry?
- Do you have anyone living in the home suffering from allergies or asthma?
- Have you noticed odd or unpleasant odors?
- Is your heating or air conditioning system over ten years old?
- Do you have children under age 15 or people over age 65?



**For more information about the HomeAdvice™ test and how indoor air quality affects your health, comfort, and safety...**

- 1-866-247-4800
- [www.airadvice.com](http://www.airadvice.com)

© 2008 AirAdvice, Inc.

ALL RIGHTS RESERVED